

**Accessoires
Accessories**

**Industrie
Industry**

1

2

3

4

5

6

**Algemene catalogus
General Catalogue**

Inhoud | Content

Alle maatvoeringen zijn ca. aanduidingen. Aan de afbeeldingen kunnen geen rechten worden ontleend. Vergissingen en wijzigingen voorbehouden.

All shown sizes and illustrations are non-binding. We reserve the right to make unpublished/unannounced modifications.

Wij leveren overeenkomstig onze laatst geldende algemene voorwaarden. Niet alle afgebeelde producten zijn uit voorraad leverbaar. Voor bepaalde producten geldt een minimale afname.

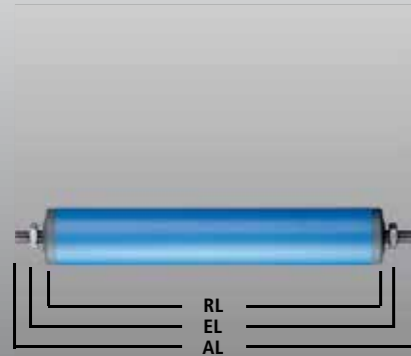
Delivery according to our latest general terms and conditions. Not all products listed are available from stock. A minimum order quantity may apply for certain products.

Alle afbeeldingen, teksten en tekeningen in onze catalogus zijn auteursrechtelijk beschermd. Voor enig gebruik hiervan is vooraf schriftelijke toestemming van Rolko vereist.

All images, texts and graphics in our current catalogues are copyright protected. Any use requires prior written permission from Rolko.

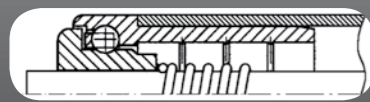
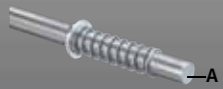


Kunststof of staal cilindrische draag/transportrollen Plastic or Steel Cylinder Conveyor Rollers	I 05-04
Kogelpotten, machinevoeten, druklagers Ball Transfer Units, Machine Feet, Thrust Bearings	I 05-06
Meubelhondjes en platenklemwagens Furniture and Plate Panel Dollies	I 05-08
Pakdekens Packing Blankets	I 05-08
Stuclopers Craftsmans Mat	I 05-08



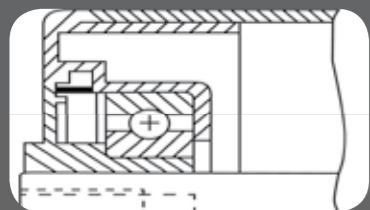
Art-Nr. Art.-No.	↓	○	A	Kleur	AL	EL	RL	○	Art-Nr. Art.-No.
R2020006FK	10	K	6	●	221	205	200	20X1,5	R2020006FK
R2030006FK	7	K	6	●	321	305	300	20X1,5	R2030006FK
R2040006FK	2	K	6	●	421	405	400	20X1,5	R2040006FK
R3020008FK	10	K	8	●	225	205	200	30X1,8	R3020008FK
R3030008FK	8	K	8	●	325	305	300	30X1,8	R3030008FK
R3040008FK	6	K	8	●	425	405	400	30X1,8	R3040008FK
R4020010FK	10	K	10	●	225	205	200	40X2,3	R4020010FK
R4030010FK	9	K	10	●	325	305	300	40X2,3	R4030010FK
R4040010FK	8	K	10	●	425	405	400	40X2,3	R4040010FK
R4050010FK	7	K	10	●	525	505	500	40X2,3	R4050010FK

Thermoplastische rol met 1 rij stalen kogels |
 Plastic bearing with one row of steel balls



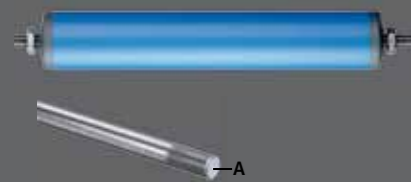
R5120010FK	20	K	10	●	227	207	200	50X2,8	R5120010FK
R5130010FK	20	K	10	●	321	305	300	50X2,8	R5130010FK
R5140010FK	20	K	10	●	421	405	400	50X2,8	R5140010FK
R5150010FK	20	K	10	●	525	505	500	50X2,8	R5150010FK
R5160010FK	20	K	10	●	627	607	600	50X2,8	R5160010FK

Thermoplastische rol met dubbele rij stalen kogels |
 Plastic bearing with two rows of steel balls



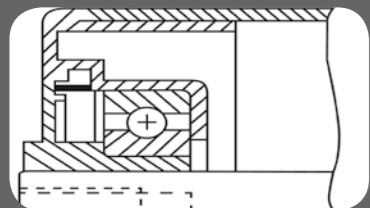
R5220010FK	100	K	10	●	226	206	200	50X2,8	R5220010FK
R5230010FK	50	K	10	●	326	306	300	50X2,8	R5230010FK
R5240010FK	30	K	10	●	426	406	400	50X2,8	R5240010FK
R5250010FK	20	K	10	●	526	506	500	50X2,8	R5250010FK
R5260010FK	10	K	10	●	626	606	600	50X2,8	R5260010FK

Thermoplastische rol met precisie lager met labyrintafdichting |
 Plastic bearing with grooved ball bearing and heat seal



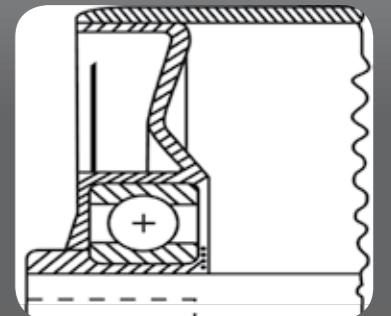
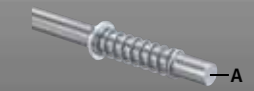
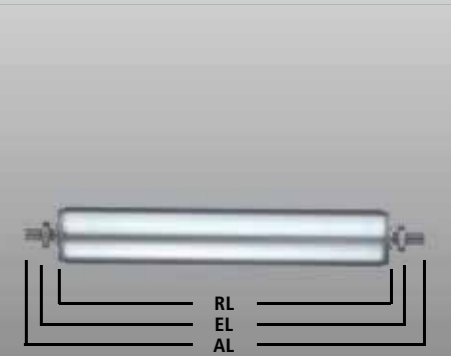
R5220010AK	100	K	M10	●	247	217	200	50X2,8	R5220010AK
R5230010AK	50	K	M10	●	347	317	300	50X2,8	R5230010AK
R5240010AK	30	K	M10	●	447	417	400	50X2,8	R5240010AK
R5250010AK	20	K	M10	●	547	517	500	50X2,8	R5250010AK
R5260010AK	10	K	M10	●	647	617	600	50X2,8	R5260010AK
R6220012AK	140	K	M12	●	249	219	200	63X3,0	R6220012AK
R6230012AK	80	K	M12	●	349	319	300	63X3,0	R6230012AK
R6240012AK	50	K	M12	●	449	419	400	63X3,0	R6240012AK
R6250012AK	30	K	M12	●	549	519	500	63X3,0	R6250012AK
R6260012AK	20	K	M12	●	649	619	600	63X3,0	R6260012AK

Thermoplastische rol met precisie lager met labyrintafdichting |
 Plastic bearing with grooved ball bearing and heat seal



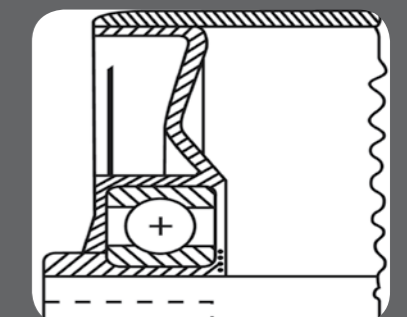
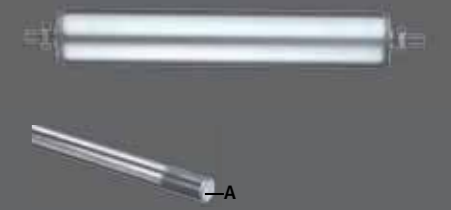
Art-Nr. Art.-No.	↓	○	A	Kleur	AL	EL	RL	○	Art-Nr. Art.-No.
R5320010FS	150	K	10	●	230	210	200	50X1,5	R5320010FS
R5330010FS	130	K	10	●	330	310	300	50X1,5	R5330010FS
R5340010FS	80	K	10	●	430	410	400	50X1,5	R5340010FS
R5350010FS	70	K	10	●	530	510	500	50X1,5	R5350010FS
R5360010FS	40	K	10	●	630	610	600	50X1,5	R5360010FS

Verzinkt stalen rol met precisie lager |
 Sheet steel bearing liner, galvanised with grooved ball bearing



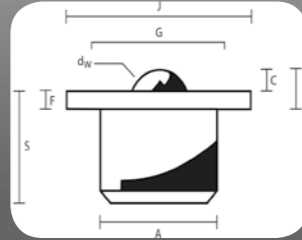
R5320010AS	240	K	M10	●	250	220	200	50X1,5	R5320010AS
R5330010AS	240	K	M10	●	350	320	300	50X1,5	R5330010AS
R5340010AS	240	K	M10	●	450	420	400	50X1,5	R5340010AS
R5350010AS	200	K	M10	●	550	520	500	50X1,5	R5350010AS
R5360010AS	130	K	M10	●	650	620	600	50X1,5	R5360010AS
R6320012AS	240	K	M12	●	252	222	200	60x1,5	R6320012AS
R6330012AS	240	K	M12	●	352	322	300	60x1,5	R6330012AS
R6340012AS	240	K	M12	●	452	422	400	60x1,5	R6340012AS
R6350012AS	240	K	M12	●	552	522	500	60x1,5	R6350012AS
R6360012AS	240	K	M12	●	652	622	600	60x1,5	R6360012AS
R8320012AS	240	K	M12	●	252	222	200	80x2,0	R8320012AS
R8330012AS	240	K	M12	●	352	322	300	80x2,0	R8330012AS
R8340012AS	240	K	M12	●	452	422	400	80x2,0	R8340012AS
R8350012AS	240	K	M12	●	552	522	500	80x2,0	R8350012AS
R8360012AS	240	K	M12	●	652	622	600	80x2,0	R8360012AS

Verzinkt stalen rol met precisie lager |
 Sheet steel bearing liner, galvanised with grooved ball bearing

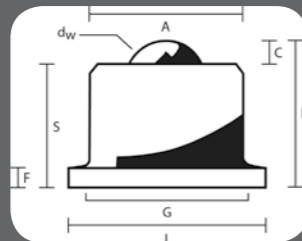




dw x B	A	S	F	J	G	Ø	↓	Art-Nr. Art.-No.
12,7 x 11,2	23,8	19,1	3,2	44,5 x 44,5	34,8 x 34,8	2x3,6	35	K127001S
25,4 x 10,3	44,5	36,0	4,7	57,2 x 57,2	44,5 x 44,5	4x5,6	135	K254001S
25,4 x 13,0	50,8	38,9	6,9	76,2 x 76,2	57,9 x 57,9	4x7,1	320	K254002S
38,0 x 25,4	60,0	48,2	12,4	76,2 x 76,2	57,9 x 57,9	4x7,1	1000	K380001S
50,8 x 33,3	101,6	84	19,0	127 x 127	101,9 x 101,9	4x11,0	2000	K508001S



dw x B	A	S	F	J	G	Ø	↓	Art-Nr. Art.-No.
12,7 x 22,6	23,8	19,1	3,2	44,5 x 44,5	34,8 x 34,8	2x3,6	35	K127011S
25,4 x 41,4	44,5	35,8	4,8	57,2 x 57,2	44,5 x 44,5	4x5,6	135	K254011S
25,4 x 45,5	50,8	39,1	6,3	76,2 x 76,2	57,9 x 57,9	4x7,1	320	K254012S
38,0 x 62,2	60,0	49,2	12,4	76,2 x 76,2	57,9 x 57,9	4x7,1	1000	K380011S
50,8 x 98,3	101,6	84	9,6	127 x 127	101,9 x 101,9	4x11,0	2000	K508011S



MIN MAX	↓	Art-Nr. Art.-No.			
100	117-146	141 +/- 2	135x110	105x75/80-10	99135100
125	137-168	163 +/- 2	135x110	105x75/80-10	99135125
150	155-195	190 +/- 2	135x110	105x75/80-10	99135150
200	205-245	240 +/- 2	135x110	105x75/80-10	99135200



↓	Art-Nr. Art.-No.			
43,0	225x145	185x105/12	1500	99142250



↓	Art-Nr. Art.-No.			
26,0	138x109	105x75-80/11	600	99141380



↓	Art-Nr. Art.-No.			
32,5	138x110	105x75-80/10	1500	99141381
32,0	150x110	105x80-121x59/12	1500	99141500
38,5	175x140	140x105/12	2000	99141750
43,0	200x160	160x120/16	5000	99142000
52,0	255x200	210x160/16	7000	99142550



Tevens leverbaar

Also available





Maat	Art-Nr. Art.-No.
75 24 108 300x500 G 150	00045900



Maat	Art-Nr. Art.-No.
100 35 140 300x600 R 350	00045901
100 35 145 350x600 R 500	00045902
125 35 165 500x600 R 600	00045905



Maat	Art-Nr. Art.-No.
100 30 140 300x600 R 250	00045903
100 30 145 350x600 R 250	00045904
125 38 165 500x600 R 350	00045906
125 38 165 600x800 R 350	00045907

Maat	Art-Nr. Art.-No.
200 50 0-70 R 500-600	00045800
200 50 0-110 R 500-600	00045801
200 50 70-160 R 500-600	00045802



Maat	Art-Nr. Art.-No.
200 50 0-70 R 200-300	00045803
200 50 0-110 R 200-300	00045804
200 50 70-160 R 200-300	00045805



Maat	Art-Nr. Art.-No.
260 85 0-70 R 200-300	00045806
260 85 0-110 R 200-300	00045807
260 85 70-160 R 200-300	00045808

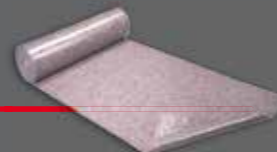


Tevens leverbaar

Also available



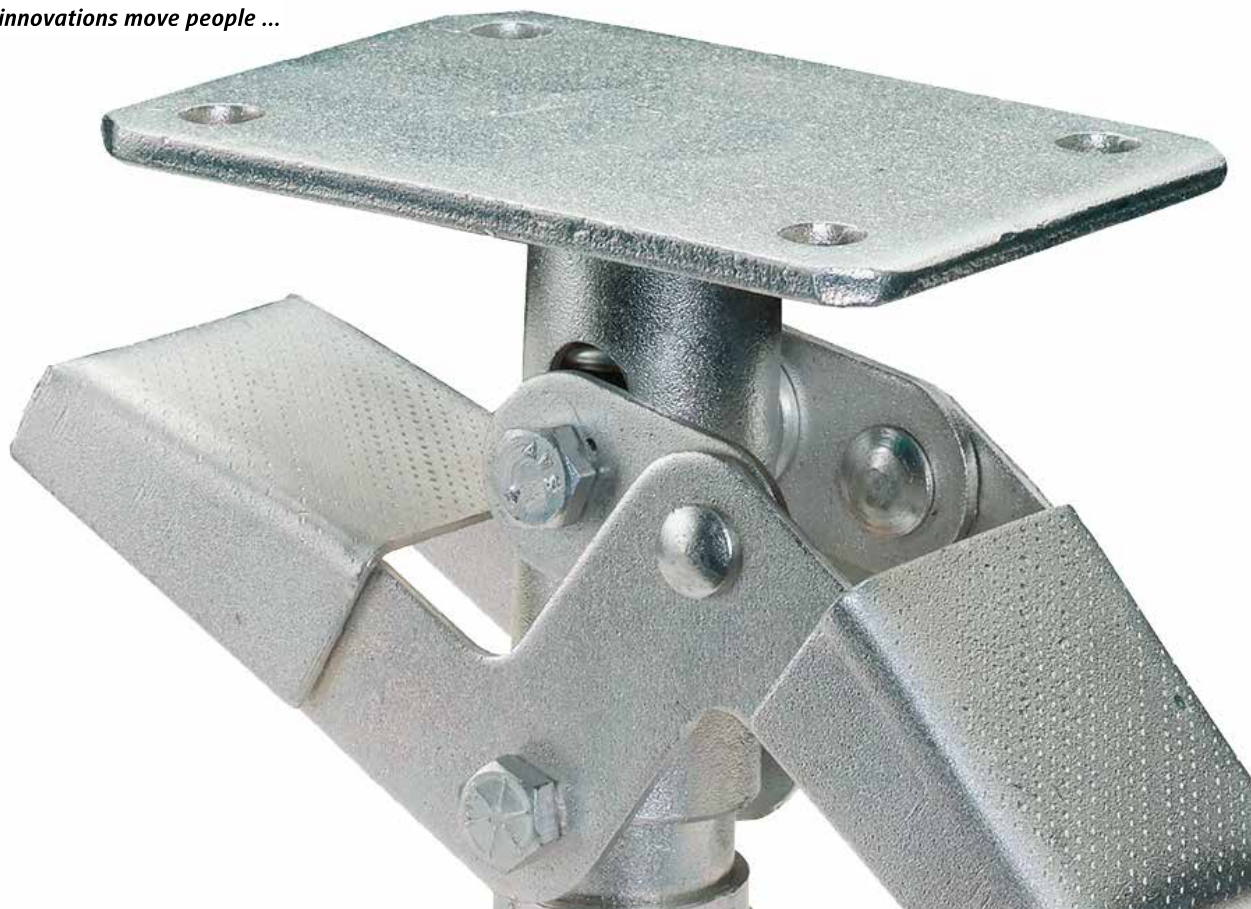
Pakdekens | Packing blankets



Stuclopers | Craftsmans mats



Our innovations move people ...



Contact

RolkoNL Team Verkoop

Phone: +31 302 567 890

Fax: +31 842 292 903

Mail: RolkoNL@rolko.com

Germany

Rolko Kohlgrüber GmbH
Industriestraße 14
D-33829 Borgholzhausen
Phone +49 5425 9402-0
Fax +49 5425 9402-20
info@rolko.com

Denmark

Rolko Scandinavia ApS
Suensonsvej 2
DK-8600 Silkeborg
Phone +45 87 20 18 88
Fax +45 86 81 86 88
RolkoDK@rolko.com

China

Production
**Xiamen Rolko
Wheels & Components Co. Ltd.**
Fujian Province
CN-361100 Xiamen

Netherlands

Rolko Nederland bv
Pakketboot 51
NL-3991 CH Houten
Phone +31 302 567 890
Fax +31 842 292 903
RolkoNL@rolko.com

More info
about us?



Scan
me!

www.rolko.com